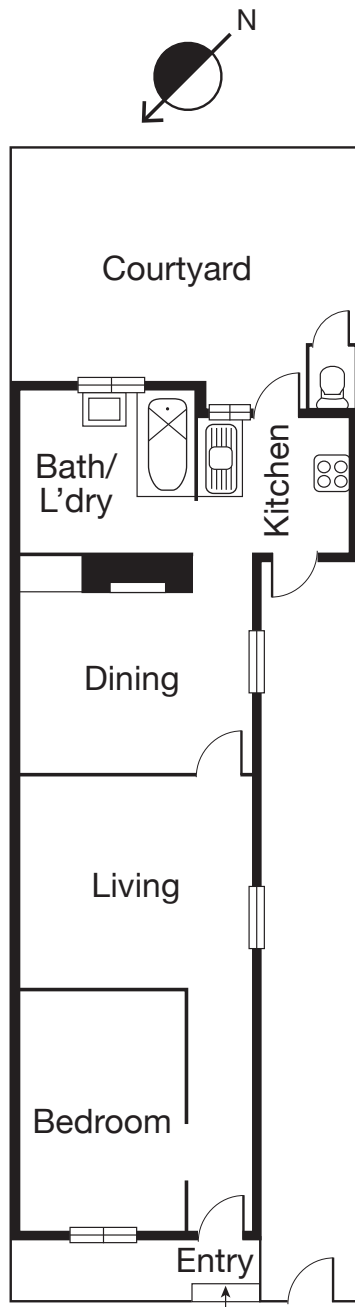


PORT MELBOURNE 58 Station Street



CAYZER



BLANK CANVAS

- Nestled in one of Port Melbourne's best tree-lined streets
- Start from scratch and be limited only by your imagination
- Homes in Port Melbourne don't come with a better location

This single fronted Victorian terrace is ready for a breath of new life. Currently comprising four rooms, side access, a quaint courtyard and historic fixtures and fittings, buyers will enjoy making this property their own.

Situated opposite the lush parklands of Turner Reserve, a short stroll from the light rail and moments from the beach and Bay Street precinct.

🛏 1 🚿 1

Auction Saturday 10 November 12pm

Inspection As advertised or by appointment

Contact Jordan Gravestain 0448 250 193
Michael Szulc 0417 122 809

Mel Ref 57 B2



CAYZER

Albert Park 330 Montague Street 03 9699 5999
Port Melbourne 370 Bay Street 03 9646 0812

cayzer.com.au